

# STATION STREET





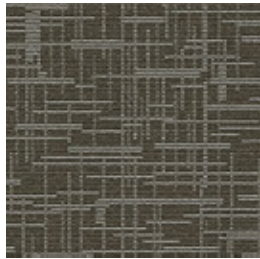


CONSTRUCTION	LOOP
PILE FIBER COMPOSITION	100% Olefin
YARN TYPE	BCF
DYE METHOD	Solution Dyed
PILE WEIGHT	710 g/m <sup>2</sup>
NUMBER OF TUFTS	232260/m <sup>2</sup>
TUFTING GAUGE	1/12"
PRIMARY BACKING	Non-Woven
SECONDARY BACKING	<b>StableShield</b> - 100% Vinyl
TILE SIZE	50 cm x 50 cm
PILE HEIGHT	2.5 mm / 5.5 mm
TOTAL PILE HEIGHT	7.5 mm
PILE TREATMENT	INVISTA Anti-Soil Treatment, Anti-Microbial (Optional)
RECOMMENDED INSTALLATION	Quarter Turn, Brick, Ashlar or Herringbone

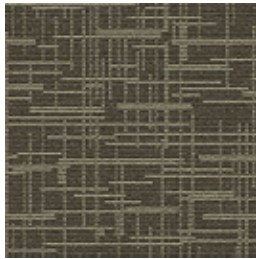
# SPECIFICATIONS



# COLOURLINE



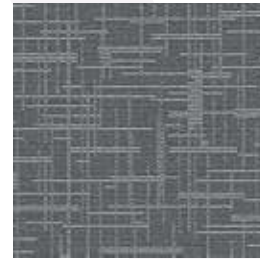
Station Street - 8847



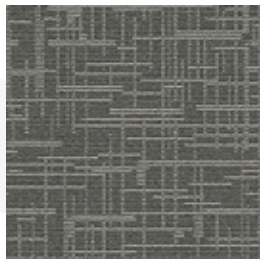
Station Street - 8863



Station Street - 8873



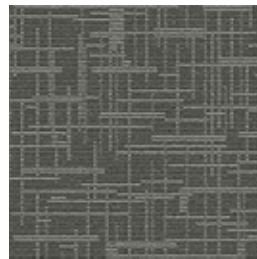
Station Street - 8874



Station Street - 8875



Station Street - 8876



Station Street - 8878



Station Street - 8896

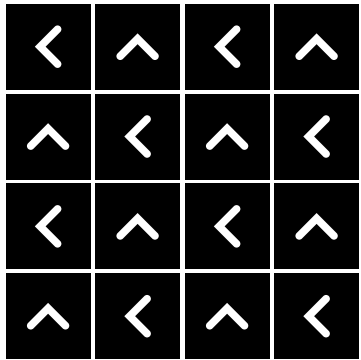




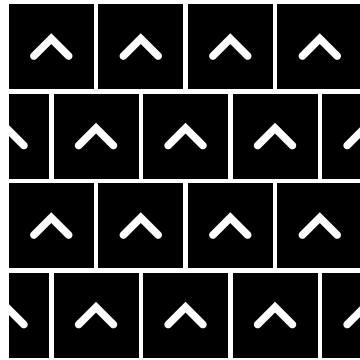


# HOW TO INSTALL

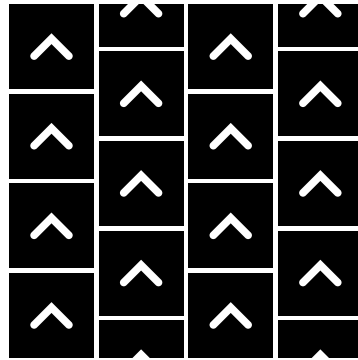
QUARTER TURN



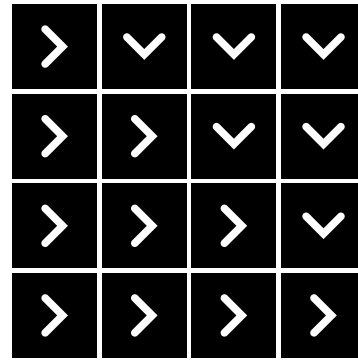
BRICK



ASHLAR



HERRINGBONE





Standard  
*CARPETS*

[www.standardcarpets.com](http://www.standardcarpets.com)